

# SCALE

## D110



€182,000\*

\*Price is in EUR ( ) and is an estimate for your own build based on the same specification

Make an inquiry

1-800-984-3355  
sales@arkonik.com

	1991
	Chawton White
	5sp Manual
	200Tdi
	Diesel
	4 Seats

# SCALE

D110

# €182,000\*

\*Price is in EUR ( ) and is an estimate for your own build based on the same specification

## EXTERIOR

Body colour	Chawton White
Paint finish	Solid
Bonnet	OEM original
Bonnet badge	Land Rover
Wheels	Steel 16" with beadlocks
Tyres	BFGoodrich® All Terrain T/A KO2
Grille	KBX® Signature inc. light surrounds
Bumper	Standard with end caps and DRLs
Steering guard	Raptor Black
Headlights	WIPAC® Xenon / Standard
Wing-top air intakes	KBX® Hi-Force
Chequer plate	Wing-top and side sills (Copper Black)
Side steps	Fire & Ice (Ebony)
Work lamp	Rear-facing LED
Rear step	NAS

## INTERIOR

Seating trim	Vintage Thatch Brown Leather
Front row seats	Modular (heated)
Front storage	Lock box with 12v & twin USB ports
Steering wheel	Evander wood rimmed 15"
Gear knobs	Alloy
Gear gaiter	Matching leather
Door cards	Matching leather
Door furniture	Alloy
Floor coverings	Black carpet
Headlining	Black suede
Sound system	Pioneer® Touch screen display with Apple® CarPlay and reversing camera display

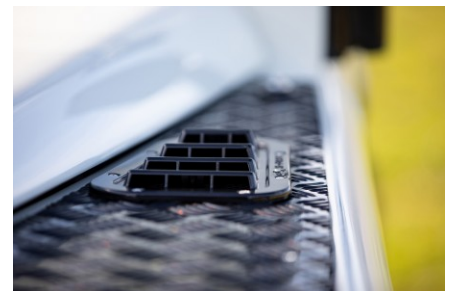
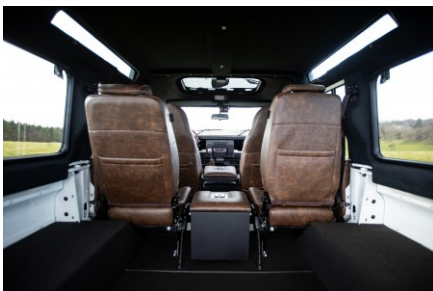
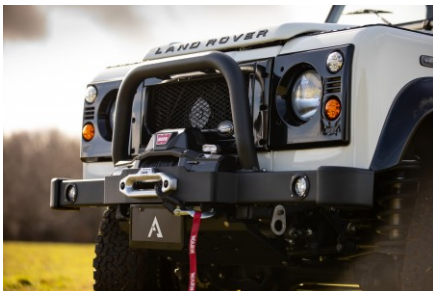


# SCALE

## D110

# €182,000\*

\*Price is in EUR ( ) and is an estimate for your own build based on the same specification



Make an inquiry

1-800-984-3355

sales@arkonik.com

RESTORED BY US. REIMAGINED BY YOU.

