




€190,000\*

\*Price is in EUR ( ) and is an estimate for your own build based on the same specification

Make an inquiry

1-800-984-3355  
sales@arkonik.com


 1989

 Limestone Beige

 5sp Manual

 3.5L V8

 Petrol

 9 Seats

## EXTERIOR

Body colour	Limestone Beige
Paint finish	Two-tone
Bonnet	OEM original
Bonnet badge	Land Rover
Wheels	Kahn® Defend 1983 18" alloy
Tyres	BFGoodrich® All Terrain T/A KO2
Grille	KBX® inc. light surrounds
Bumper	Standard with end caps and DRLs
Steering guard	Raptor Black
Headlights	Truck-Lite Twin-Cat LEDs
Wing-top air intakes	KBX® Hi-Force
Chequer plate	Wing-top and side sills (Satin Black)
Side steps	Fire & Ice (Ebony)
Work lamp	Rear-facing LED
Rear step	NAS with 2" square receiver
Window tints	Yes

## INTERIOR

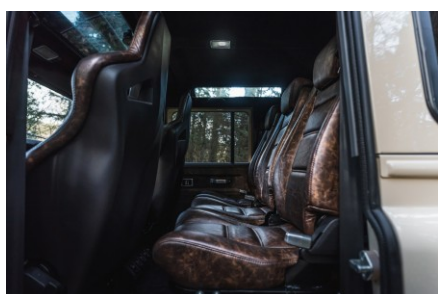
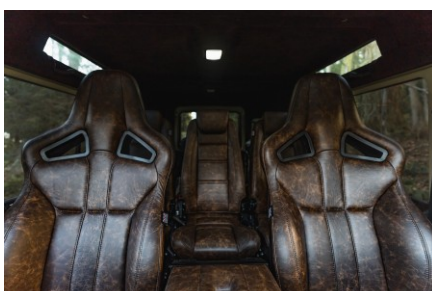
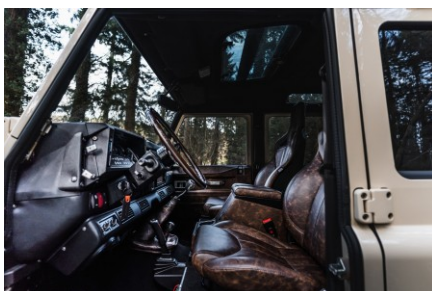
Seating trim	Vintage Thatch Brown Leather
Front row seats	Elite Sports (heated)
Front storage	Premium Lock box with USB port
Load area seats	Inward facing tip-ups
Steering wheel	Evander wood rimmed 15"
Gear knobs	Alloy
Gear gaiter	Matching leather
Door cards	Matching leather
Door furniture	Brushed alloy
Floor coverings	Black carpet
Headlining	Brown suede
Sound system	Pioneer® Touch screen display with Apple® CarPlay and reversing camera display

# CANYON

## D110

€190,000\*

\*Price is in EUR ( ) and is an estimate for your own build based on the same specification



Make an inquiry

1-800-984-3355  
sales@arkonik.com

RESTORED BY US. REIMAGINED BY YOU.

