









POA

Make an inquiry

1-800-984-3355  
sales@arkonik.com

	1996
	Keswick Green
	5sp Manual
	300Tdi
	Diesel
	9 Seats

# CROFT

D110

## EXTERIOR

Body colour	Keswick Green
Paint finish	Solid
Bonnet	OEM original
Wheels	Steel 16" (Chawton White)
Tyres	BFGoodrich® All Terrain T/A KO2
Grille	Heritage
Bumper	Winch bumper with DRLs
Steering guard	Raptor Black
Headlights	Truck-Lite Twin-Cat LEDs
Wing-top air intakes	Billet Alloy
Side steps	Fire & Ice (Ebony)
Work lamp	Rear-facing LED
Rear step	NAS with 2" square receiver

## INTERIOR

Seating trim	Vintage Thatch Brown Leather
Front row seats	Elite (heated)
Front storage	Lock box with 12v & twin USB ports
Load area seats	Bench
Steering wheel	Evander wood rimmed 15"
Gear knobs	Black anodized
Gear gaiter	Matching leather
Door furniture	Black anodized
Floor coverings	Black carpet
Headlining	Brown suede
Sound system	Pioneer® Touch screen display with Apple® CarPlay and reversing camera display

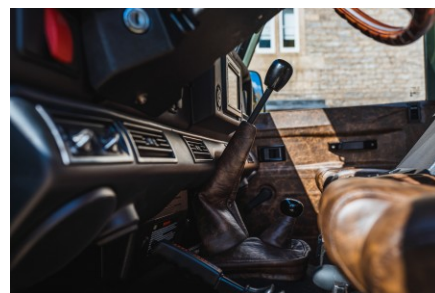
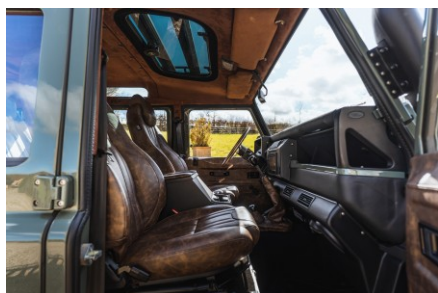




# CROFT

## D110

---



Make an inquiry

1-800-984-3355  
sales@arkonik.com

RESTORED BY US. REIMAGINED BY YOU.

